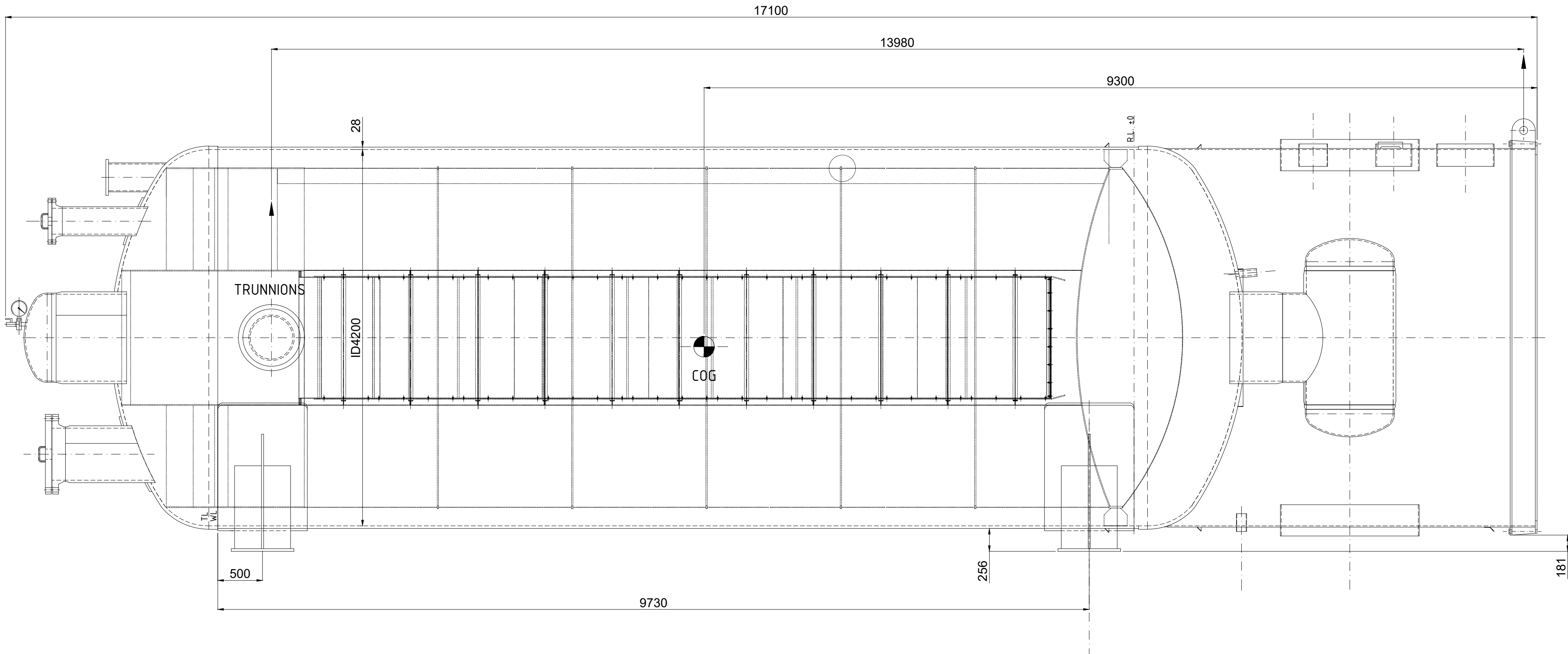
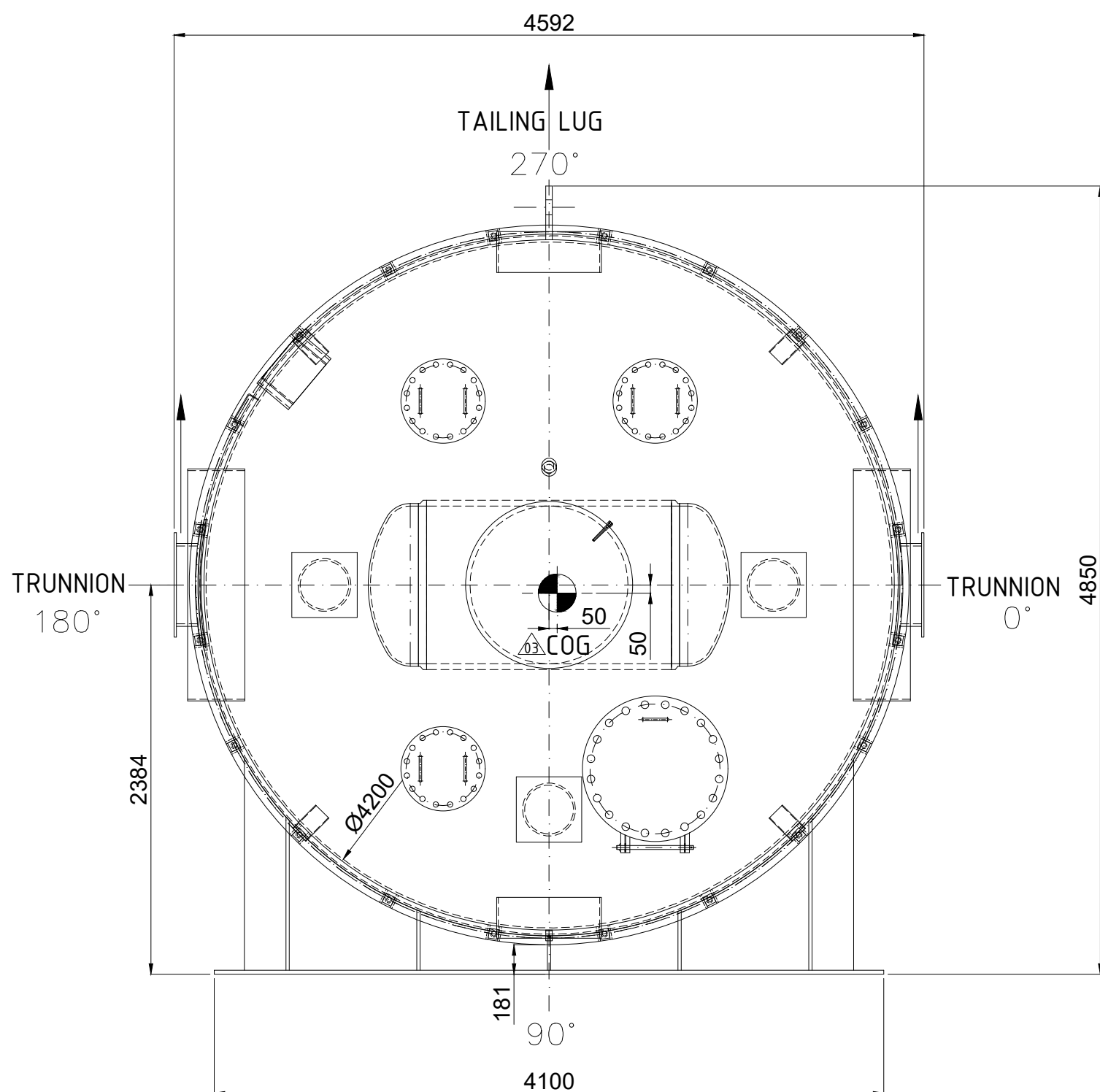


REFERENCE - SAMPLE

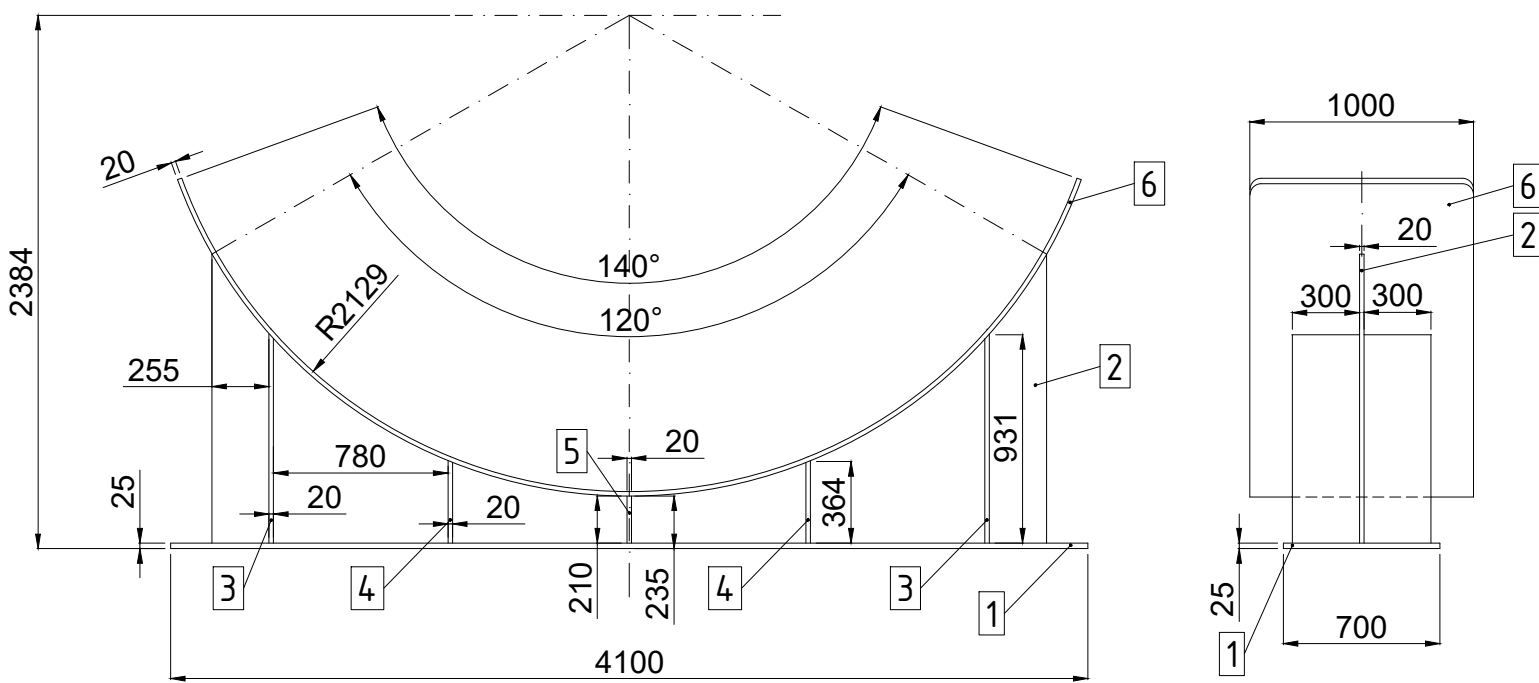
VESSEL POSITION ON SUPPORTS



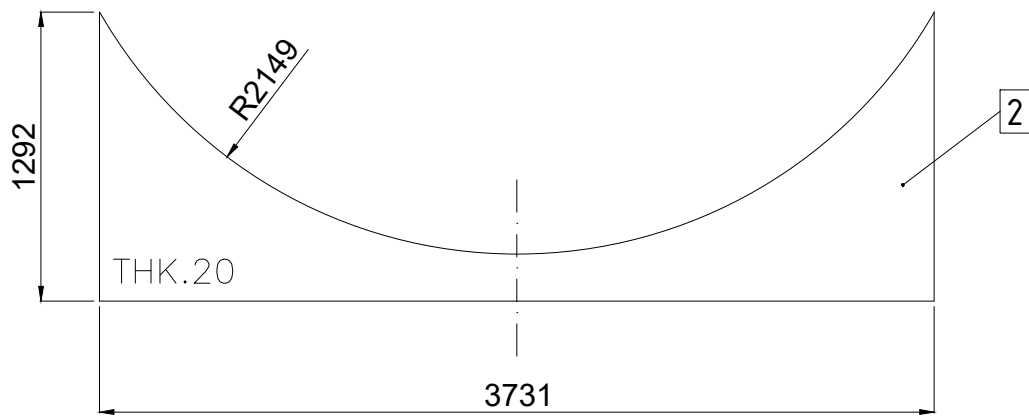
REAL ORIENTATION
VESSEL A



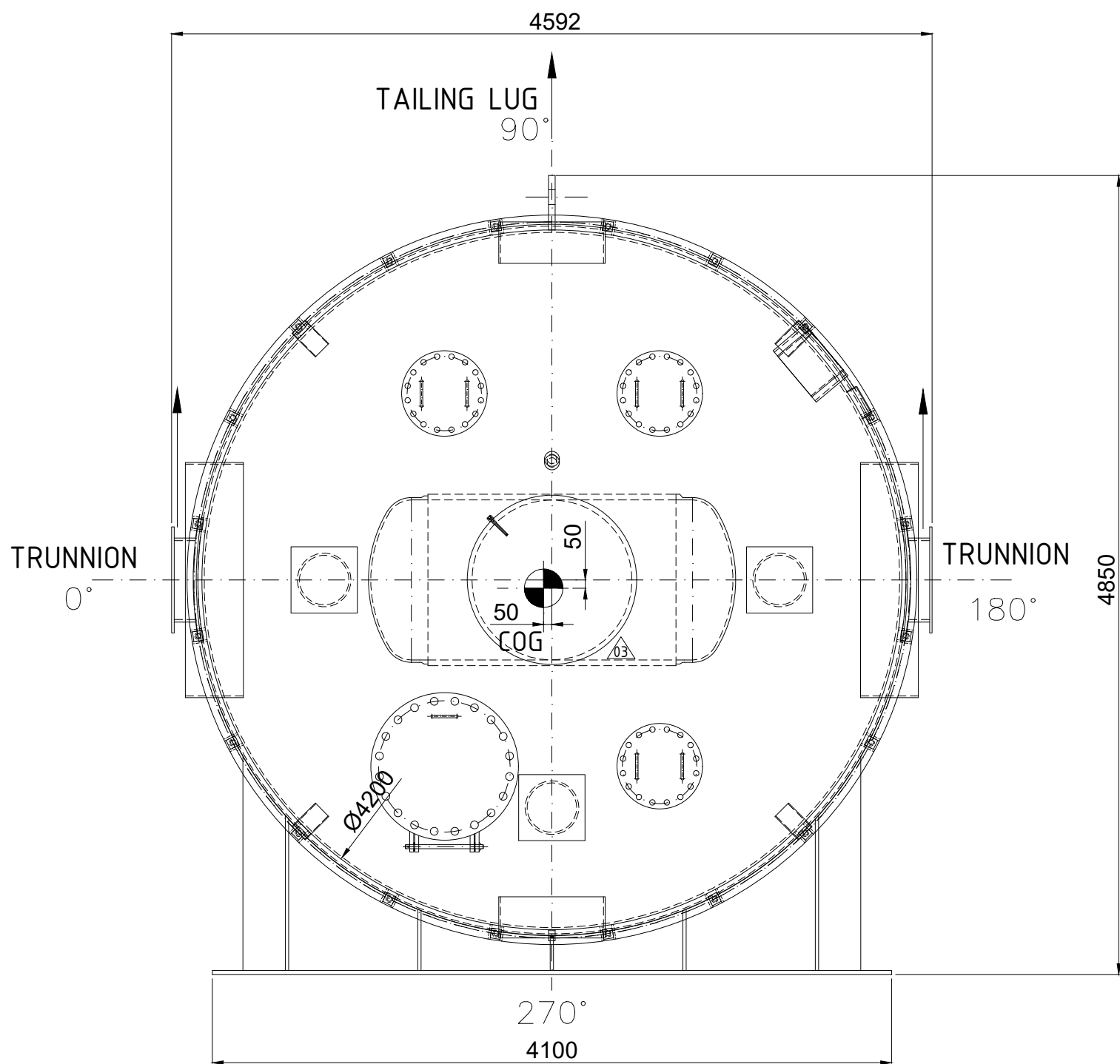
SADDLE SUPPORT – 4 PIECES FOR BOTH VESSELS TAG NO.: 3-A2626A/B



ITEM 2



REAL ORIENTATION
VESSEL B



Comments:	Dpt.:	Date:
000	ENCS	19. Sep 2023
Name:	Paul Schuster	

CONFIDENTIAL

☒ No further submission.
Document accepted as final.

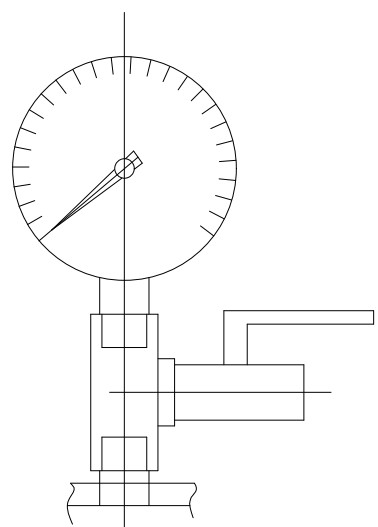
☐ Incorporate comments and
resubmit the document.

☐ Document not accepted and
rejected.

This review does not constitute acceptance or approval
of design details, calculations, analysis, test methods, or
material developed or selected by the supplier and does
not relieve supplier from full compliance with specifications
and contractual obligations.

Linde Linde Engineering
Date: 20. Sep 2023 Dept.: ENDIM
Name: Nilam Patel

ALL CHAMBER MUST BE
MARKED WITH N2 WARNING
SIGNS AND RISKS OF
SUFFOCATION
FILLING WITH N2 AT 0.3 Barg



MANOMETER DETAIL


DIMENSIONS (CM)

L x W x H (CM) - 1710 x 459x 485

WEIGHT SUMMARY	
SHIPPING WEIGHT (including saddles)	68576 KG / 1 vessel
EMPTY WEIGHT	64714 KG / 1 vessel

ACCELERATIONS
DURING TRANSPORT

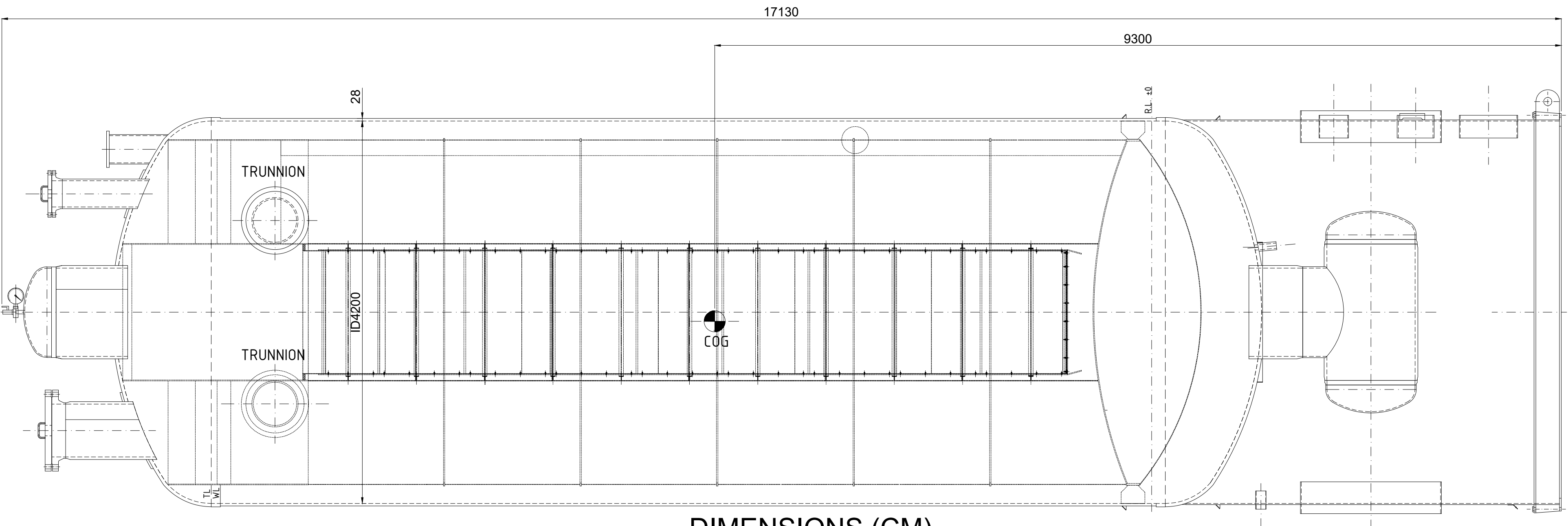
LONGITUDINAL DIRECTION	0.8g
TRANSVERSE DIRECTION	0.5g
VERTICAL DIRECTION	0.3g

		LINDE GmbH LINDE ENGINEERING D-82049 PULLACH	
Confidential: The reproduction, distribution and utilization of this document as well as the communication of its contents to others may be subject to the terms and conditions of the EPC contract (No.9900023155). - All right reserved in the event of the grant of a patent, utility model or design.			
Linde Project No. : 1510 CD77		Linde Job Code. : Plock ASU 3	
Title: MOLECULAR-SIEVE ADSORBER ID= 4200 mm TAG no.: 3-A2626A/B		Scale	
Linde Drawing No.	&VD_<3-2626>_B-ZT_1001 <EN>	Sheet 1/2	Size A1

REFERENCE - SAMPLE

ROTATED POSITION OF VESSEL REQUESTED BY FORWARD

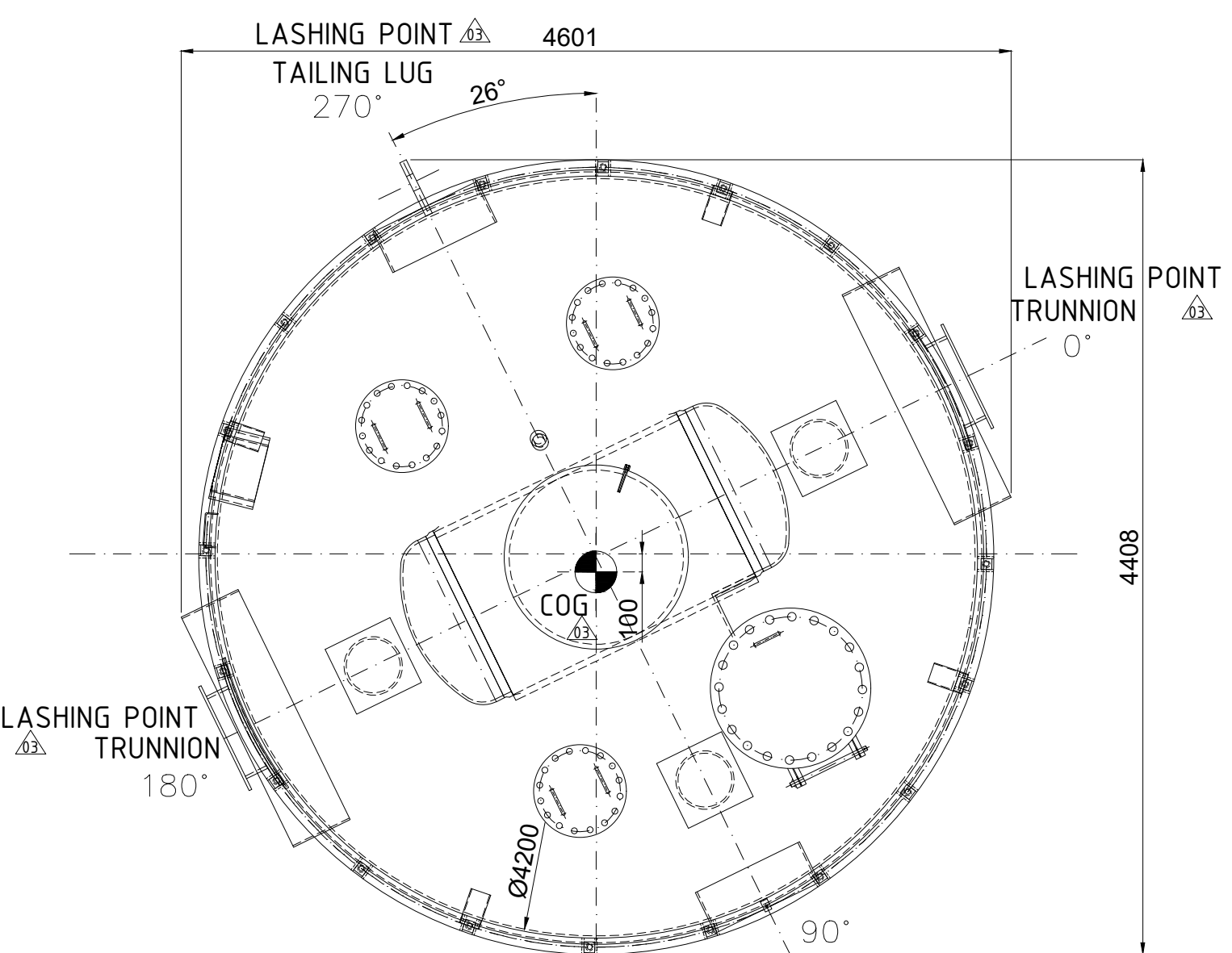
DIRECTION OF TRANSPORT



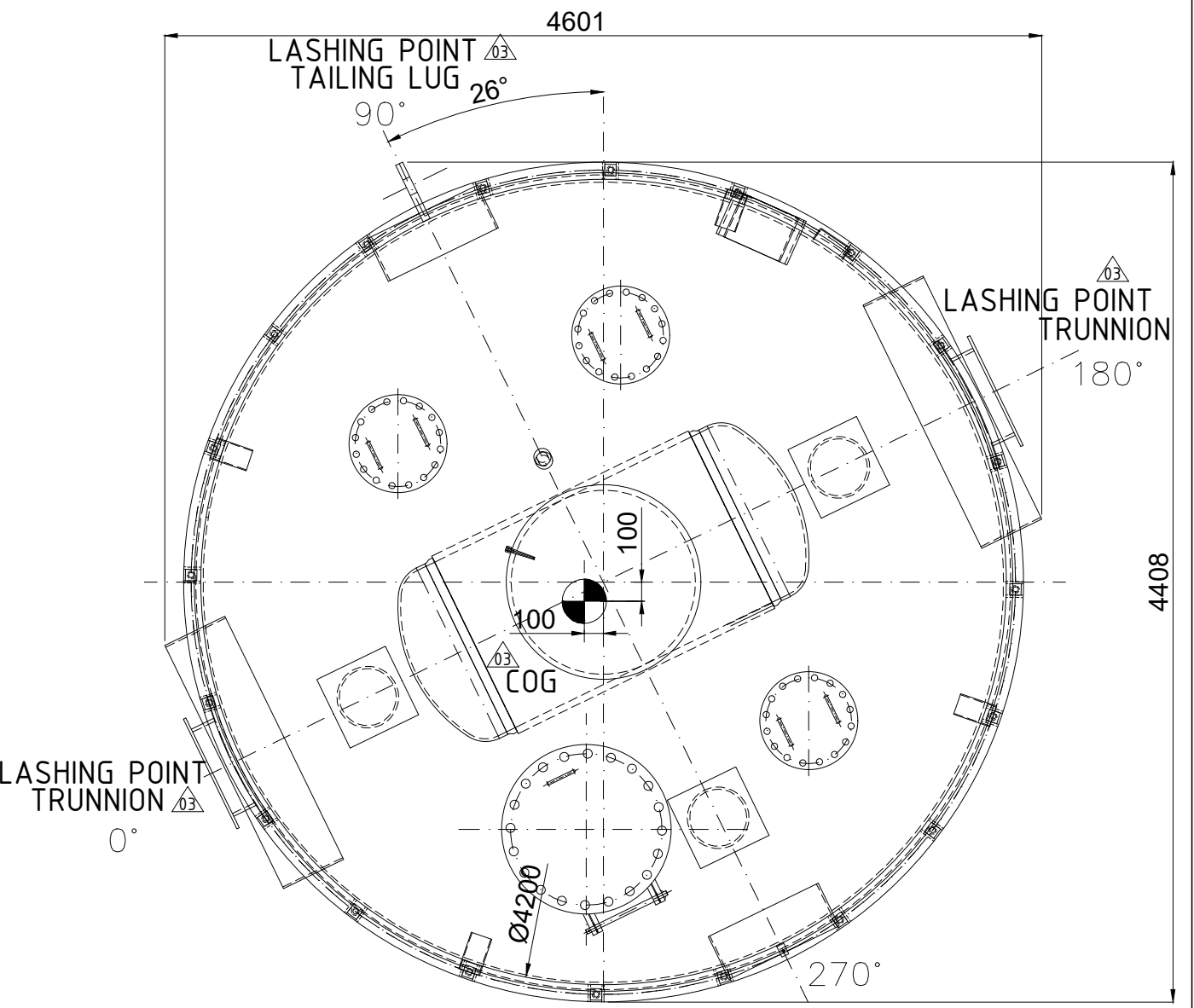
DIMENSIONS (CM)

L x W x H (CM) - 171 x 460 x 440

ROTATED ORIENTATION VESSEL A



ROTATED ORIENTATION VESSEL B

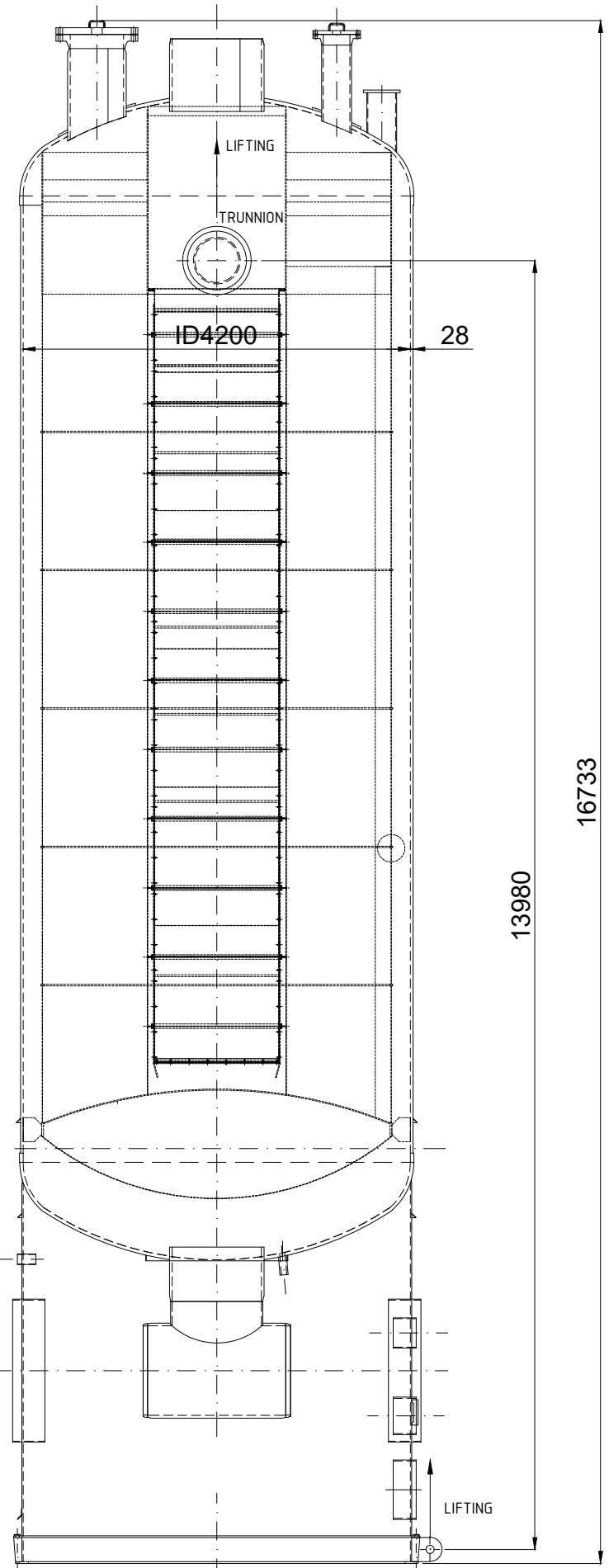
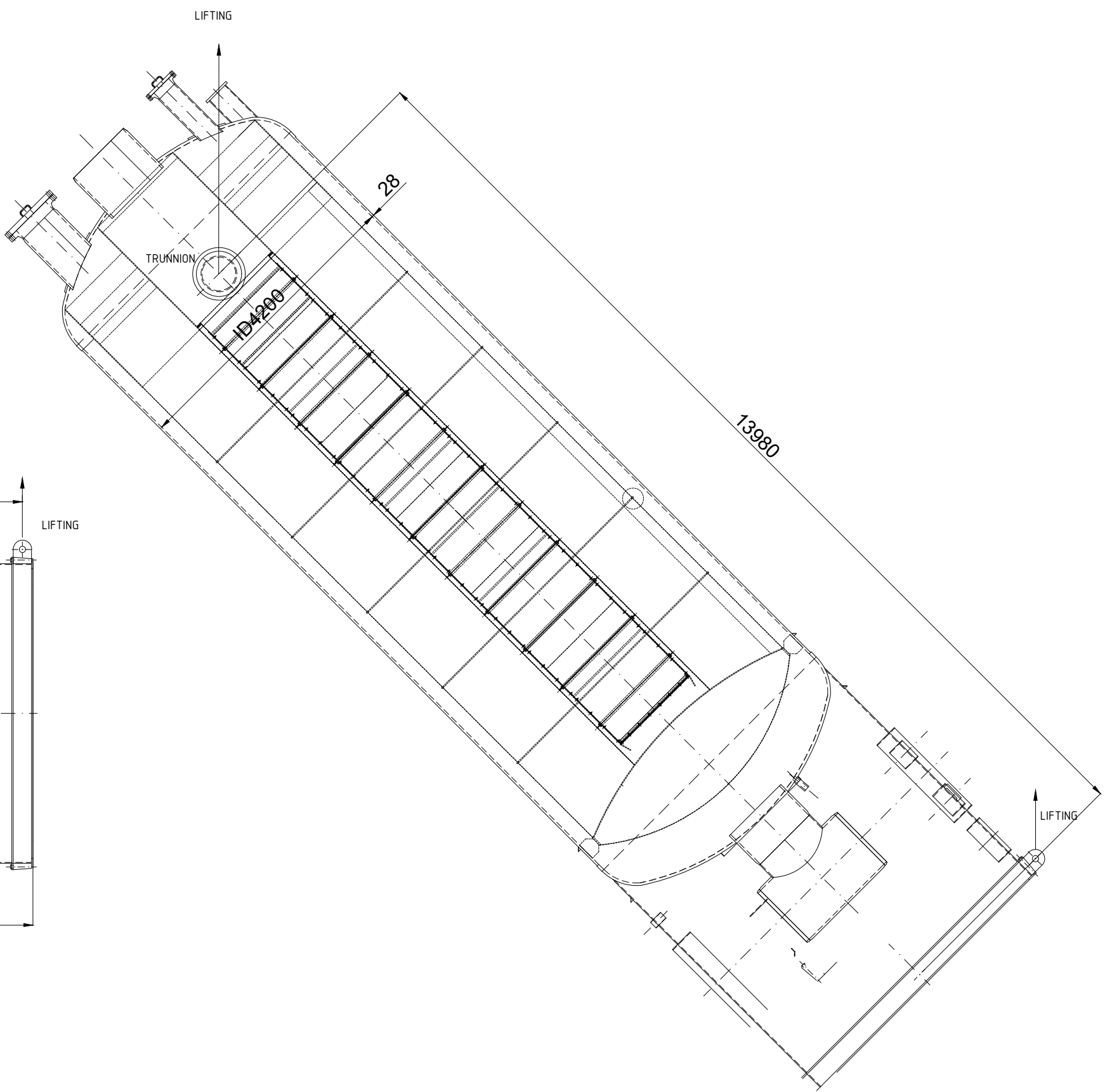
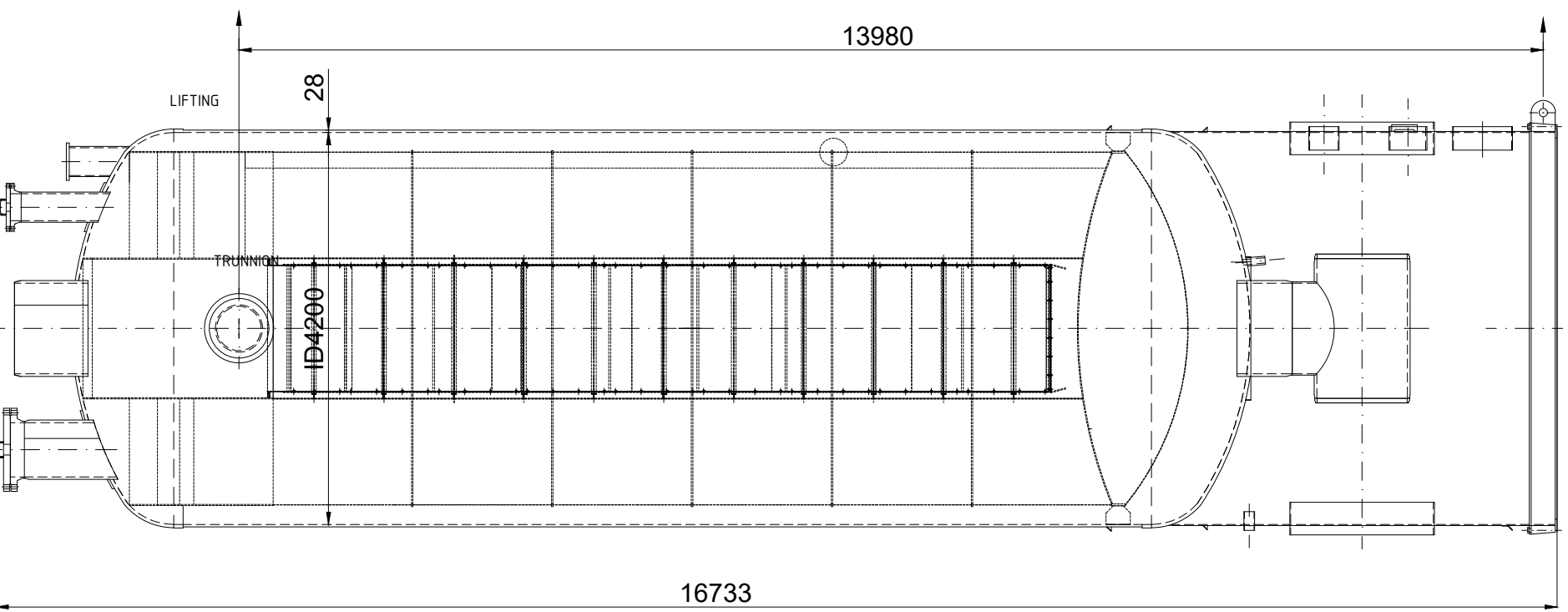


INITIAL POSITION FOR LIFTING

INTERMEDIATE POSITION FOR LIFTING

FINAL POSITION FOR LIFTING

CONFIDENTIAL



WEIGHT SUMMARY

EMPTY WEIGHT 64714 KG / 1 vessel

Title:	MOLECULAR-SIEVE ADSORBER	Scale
	ID= 4200 mm	
	TAG no.: 3-A2626A/B	
Linde Drawing No.	&VD_(3-2626)_B-ZT_1001 (EN)	Sheet 2/2
		Size A1